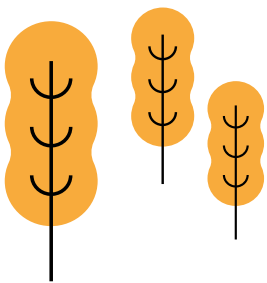




PACi HIGH STATIC PRESSURE HIDE AWAY

- High ESP (external static pressure) up to 150Pa
- Automatic learning function for the required static pressure on site during commissioning*
- DC FAN for better efficiency and control
- Built in drain pump
- Twin split options
- Easy connection and control of external fan or ERV using the connector PAW-FDC on the indoor unit PCB. The external device can be controlled by the remote control of the indoor unit
- New Comfort Cloud control

* A standard wired remote controller is required.



R32	A++ 6,50 SEER/4,60 SCOP	INVERTER+	-15°C COOLING MODE	-20°C HEATING MODE	DC FAN
-----	----------------------------	-----------	-----------------------	-----------------------	--------

Refrigerant gas R32 that shows a drastic reduction in the value of Global Warming Potential (GWP). — Exceptional Seasonal cooling efficiency based on the ErP regulation. — Exceptional Seasonal heating efficiency based on the ErP regulation. — Inverter Plus System classification highlights the highest performing Panasonic systems. — The air conditioner works in cooling mode with an outdoor temperature of -15°C. — The air conditioner works in heating mode even when outdoor temperatures are as low as -20°C. — DC Fan. Safe and precise.

FILTER INCLUDED	R22/R410A RENEWAL	OPTIONAL WLAN	DATANAVI	BMS CONNECTIVITY	5 YEARS COMPRESSOR WARRANTY
-----------------	-------------------	---------------	----------	------------------	-----------------------------

Filter Included — R410A/R22 renewal. — Internet Control. A next generation system providing a user-friendly remote controller of air conditioning or heat pump units from everywhere, using a simple Android or iOS smartphone, tablet or PC via internet. — Datanavi, a new way to connect. Simple and easy support tool with your smartphone. — BMS connectivity. The communication port can be integrated into the indoor unit and provides easy connection to, and control of, your Panasonic heat pump to your home or building management system. — 5 Years compressor warranty.

The ducted system is the ideal solution for flexible concealed air conditioning. Optional 200mm spigots ensure simple and hassle-free connection to spiral ductwork. Using a high-lift drain pump, drain piping can be elevated up to 785mm from the base of the unit.

PACi R32 Refrigerant Gas



Panasonic recommends R32 because it is comparably environmentally friendly. Compared to R22 and R410A, R32 has a very low potential impact on global warming. Panasonic is leading the switch to R32.

The static pressure outside the unit can be increased up to 150 Pa

Type		36	45	50	60	71	100	125	140
Standard	Pa	70	70	70	70	70	100	100	100
Maximum available setting	Pa	150	150	150	150	150	150	150	150

New Commercial WLAN Adaptor

New CZ-CAPWFC1 interface adaptor, allows connection of one or a group of indoor units to be managed by the Panasonic Comfort Cloud App, which provides control, monitoring, scheduling and error alerts.



Plenums

Air Outlet Plenum (without regulation adaptor)

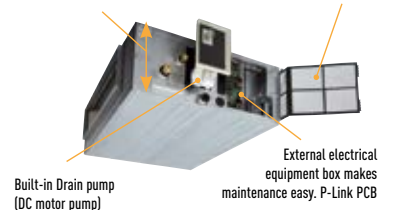
Diameters	Model
36, 45 & 50	2xØ 200 CZ-56DAF2
60 & 71	3xØ 200 CZ-90DAF2
100, 125 & 140	4xØ 200 CZ-160DAF2

Air Inlet Plenum

Diameters	Model
60 & 71	3xØ 200 CZ-DUMPA90MF2
100, 125 & 140	4xØ 200 CZ-DUMPA160MF2

Standardized height of 290mm for all models. Height standardization enables easy and uniform installation for models with different capacities.

- Built-in filter
- Side removable filter



Datanavi, a new way to connect. Simple and easy support tool with your smartphone



Just holding up your smartphone to the LED display on a remote controller (CZ-RTC5B) to receive useful AC system information super fast by Panasonic Light ID Technology.

- Scan & Save AC system info
- Easy access to manual database
- Commissioning, F gas check data history



Remote controller	Cooling Capacity Nom [Min - Max] kW	SEER ¹⁾	Heating Capacity Nom [Min - Max] kW	SCOP ¹⁾	Indoor unit	Ext. static pressure ²⁾		Sound pressure ³⁾ dB(A)	Dimension [In] H x W x D mm	Outdoor unit ⁴⁾	Dimension [Out] H x W x D mm	Piping length range / Elevation difference [in/out] ⁵⁾ - m
						Pa	Pa					
PACi ELITE. KIT-__H5 Single Phase / KIT-__H8 Three Phase.												
CZ-RTC5B	3,60kW KIT-36PF1ZH5	3,60(1,50 - 4,00)	6,10 A++	4,00(1,50 - 5,00)	4,30 A+	S-36PF1E5B	70(10 - 150)	33/29/25	290 x 800 x 700	U-36PZH2E5	695 x 875 x 320	3 - 40 / 30
	5,00kW KIT-50PF1ZH5	5,00(1,50 - 5,60)	5,90 A+	5,60(1,50 - 6,50)	4,20 A+	S-50PF1E5B	70(10 - 150)	34/30/26	290 x 800 x 700	U-50PZH2E5	695 x 875 x 320	3 - 40 / 30
	6,00kW KIT-60PF1ZH5	6,00(2,00 - 7,10)	6,40 A++	7,00(1,80 - 8,00)	4,30 A+	S-60PF1E5B	70(10 - 150)	35/32/26	290 x 1000 x 700	U-60PZH2E5	695 x 875 x 320	3 - 40 / 30
	7,10kW KIT-71PF1ZH5	7,10(2,20 - 9,00)	6,50 A++	8,00(2,00 - 9,00)	4,60 A++	S-71PF1E5B	70(10 - 150)	35/32/26	290 x 1000 x 700	U-71PZH2E5	996 x 940 x 340	5 - 50 / 30
	10,00kW KIT-100PF1ZH5	10,00(3,10 - 12,50)	6,20 A++	11,20(3,10 - 14,00)	4,40 A+	S-100PF1E5B	100(10 - 150)	38/34/31	290 x 1400 x 700	U-100PZH2E5	1416 x 940 x 340	5 - 85 / 30
	12,50kW KIT-125PF1ZH5	12,50(3,20 - 14,00)	5,88	14,00(3,20 - 16,00)	4,26	S-125PF1E5B	100(10 - 150)	39/35/32	290 x 1400 x 700	U-125PZH2E5	1416 x 940 x 340	5 - 85 / 30
	14,00kW KIT-140PF1ZH5	14,00(3,30 - 16,00)	5,73	16,00(3,30 - 18,00)	4,18	S-140PF1E5B	100(10 - 150)	40/36/33	290 x 1400 x 700	U-140PZH2E5	1416 x 940 x 340	5 - 85 / 30
	7,10kW KIT-71PF1ZH8	7,10(2,20 - 9,00)	6,40 A++	8,00(2,00 - 9,00)	4,60 A++	S-71PF1E5B	70(10 - 150)	35/32/26	290 x 1000 x 700	U-71PZH2E8	996 x 940 x 340	5 - 50 / 30
	10,00kW KIT-100PF1ZH8	10,00(3,10 - 12,50)	6,10 A++	11,20(3,10 - 14,00)	4,40 A+	S-100PF1E5B	100(10 - 150)	38/34/31	290 x 1400 x 700	U-100PZH2E8	1416 x 940 x 340	5 - 85 / 30
	12,50kW KIT-125PF1ZH8	12,50(3,20 - 14,00)	5,87	14,00(3,20 - 16,00)	4,26	S-125PF1E5B	100(10 - 150)	39/35/32	290 x 1400 x 700	U-125PZH2E8	1416 x 940 x 340	5 - 85 / 30
14,00kW KIT-140PF1ZH8	14,00(3,30 - 16,00)	5,72	16,00(3,30 - 18,00)	4,18	S-140PF1E5B	100(10 - 150)	40/36/33	290 x 1400 x 700	U-140PZH2E8	1416 x 940 x 340	5 - 85 / 30	
PACi STANDARD. KIT-__H5 Single Phase / KIT-__H8 Three Phase.												
CZ-RTC5B	6,00kW KIT-60PF1Z5	6,00(2,00 - 7,10)	6,10 A++	6,00(1,80 - 7,00)	4,20 A+	S-60PF1E5B	70(10 - 150)	35/32/26	290 x 1000 x 700	U-60PZ2E5	695 x 875 x 320	3 - 40 / 30
	7,10kW KIT-71PF1Z5	7,10(2,00 - 7,70)	6,10 A++	7,10(1,80 - 8,10)	4,30 A+	S-71PF1E5B	70(10 - 150)	35/32/26	290 x 1000 x 700	U-71PZ2E5	695 x 875 x 320	3 - 40 / 30
	10,00kW KIT-100PF1Z5	10,00(3,00 - 11,50)	5,60 A+	10,00(3,00 - 14,00)	3,80 A	S-100PF1E5B	100(10 - 150)	38/34/31	290 x 1400 x 700	U-100PZ2E5	996 x 980 x 370	5 - 50 / 30
	12,50kW KIT-125PF1Z5	12,50(3,20 - 13,50)	5,56	12,50(3,30 - 15,00)	3,61	S-125PF1E5B	100(10 - 150)	39/35/32	290 x 1400 x 700	U-125PZ2E5	996 x 980 x 370	5 - 50 / 30
	14,00kW KIT-140PF1Z5	14,00(3,30 - 15,00)	5,38	14,00(3,40 - 16,00)	3,54	S-140PF1E5B	100(10 - 150)	40/36/33	290 x 1400 x 700	U-140PZ2E5	996 x 980 x 370	5 - 50 / 30
	10,00kW KIT-100PF1Z8	10,00(3,00 - 11,50)	5,60 A+	10,00(3,00 - 14,00)	3,80 A	S-100PF1E5B	100(10 - 150)	38/34/31	290 x 1400 x 700	U-100PZ2E8	996 x 980 x 370	5 - 50 / 30
	12,50kW KIT-125PF1Z8	12,50(3,20 - 13,50)	5,54	12,50(3,30 - 15,00)	3,61	S-125PF1E5B	100(10 - 150)	39/35/32	290 x 1400 x 700	U-125PZ2E8	996 x 980 x 370	5 - 50 / 30
	14,00kW KIT-140PF1Z8	14,00(3,30 - 15,00)	5,37	14,00(3,40 - 16,00)	3,54	S-140PF1E5B	100(10 - 150)	40/36/33	290 x 1400 x 700	U-140PZ2E8	996 x 980 x 370	5 - 50 / 30

Accessories	PAW-WTRAY	CZ-90DAF2
CZ-RTC5B	Tray for condenser water compatible with base ground support	Air Outlet Plenum S...PF1E5B 60 & 71
CZ-RWS3-CZ-RWRC3	Outdoor base ground support for noise and vibration absorption	CZ-160DAF2
CZ-RE2C2	Outdoor elevation platform 400x900x400mm	Air Outlet Plenum S...PF1E5B 100, 125 & 140
	Air Outlet Plenum S...PF1E5B 36, 45 & 50	CZ-DUMPA90MF2
		Air Inlet Plenum S...PF1E5B 60 & 71
		CZ-DUMPA160MF2
		Air Inlet Plenum S...PF1E5B 100, 125 & 140
		CZ-CAPWFC1
		NEW Commercial WLAN Adaptor

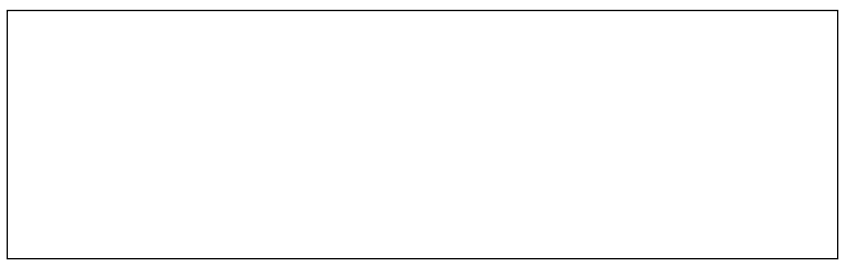
¹⁾ For models below 12kW, the SEER and SCOP is calculated based on values of EU/626/2011. For models above 12kW, the SEER and SCOP is calculated based on values of EU/2281/2016. ²⁾ Medium External static pressure setting from factory. ³⁾ The sound pressure of the units shows the value measured of the position 1,5 below the unit. The sound pressure is measured in accordance with Eurovent 4/C/004-97 specification. ⁴⁾ Outdoor unit operation range: PZH: Cooling -15 ~ +44°C, Heating -20 ~ +24°C, PZ: Cooling -10 ~ +43°C, Heating -15 ~ +24°C. ⁵⁾ When installing the outdoor unit at a higher position than the indoor unit. * Recommended fuse for the indoor 3A.



To find out how Panasonic cares for you, log on to: www.aircon.panasonic.eu

Panasonic Marketing Europe GmbH
Panasonic Air Conditioning
Hagenauer Strasse 43, 65203 Wiesbaden, Germany

heating & cooling solutions



Due to the ongoing innovation of our products, the specifications of this catalogue may be subject to minor modifications by the manufacturer without prior warning in order to improve the product. The total or partial reproduction of this catalogue is prohibited without the express authorisation of Panasonic Marketing Europe GmbH.